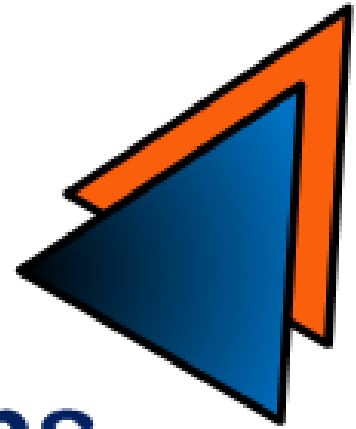


Orange



Technical Solutions

Company Details



Name of the Proprietor : Nilesh R Washimkar

Registered Office Address : Orange Technical Solutions
G No 1169, Building No G, FL 506,
A Courtyard Chikhali
Pune 411 062

Registration Details : Registration No : Chikhali/ II / 17785
PAN No : AARPW0808M
GST No : 27AARPW0808M1ZZ
I E Code : 3115008872

Bank Details Bank Name : Axis Bank Limited
Omkar Plaza, GI Fl. P No GP-77 G Block,
Thermax Chowk Chinchwad, Pune 411019
Account No : 915020032456731
IFSC Code : UTIB0002762

PROFILE



Orange Technical Solutions is a solution provider company having trading arm. We provide highly competitive, faster and professional solutions in the field of fabrication, HVAC , Lighting and AMC's. It facilitates a smooth flow of products as well as the services to the customers, giving value to all.

We meet business challenges innovatively and pride in our ears on the ground thus responding proactively to our customers' problems in current volatile markets. Our passion is to team up with our customers to search for solutions which helps us all to increase the bar next time around. Combining market knowledge with financial resources, we deliver flexible options for the entire gamut

With a backup of dedicated staff and zeal to succeed, Orange Technical Solutions is a lean but hungry commodity solutions provider. It exercises its core capabilities in the fast-moving discipline of global design, commodity trading, knowledge.

You can also label us as an outsourcing company for we bear the entire responsibility of sourcing commodities for various companies. In this way, it enable our customers to concentrate on their core business, thereby creating a win-win relationship.

Business Activities

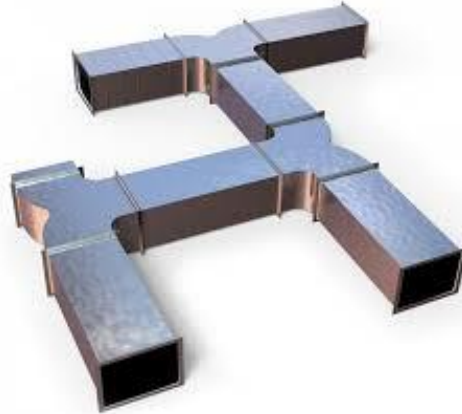


- **Fabrication** : It includes MS as well SS Fabrication.
- **Heating Ventilation & Air conditioning Units** : SITC of Air Shower, Air Conditioning, Ducting, Air Handling units, Blower, Axial Fan etc.
- **Air Pollution Control System** : SITC of Chimney, MS Ducting, Hood, Spark Arrester, Blower, Dust Collector, Etc
- **Lighting System** : It Includes Pole, High Masts, Light Fittings.
- **Solar System** : It Includes on grid & off Grid Solar System, Solar Poles etc.
- **CCTV** : SITC of CCTV camera for residential as well as Industrial Areas.
- **Clean Room Equipment's & Air Filters** of various kind Etc,
- **AMC & Services:** for HVAC, Air pollution Control, Equipment's & Electricals works.

Fabrication Works:



We undertake all kinds of Fabrication work from light duty to heavy duty, We offer SMAW, TIG and CO2 welding options to our clients, depending on the raw material to be used. We offer our jobs for Ultrasonic as well Radiography Testing by 3rd Party Inspection Agencies, if required .



Material Handling Trolleys, Working / Inspection Table



Orange Technical Solutions is bind to fulfill their customer's needs with a sophisticated design and a superior quality to enhance working moments.



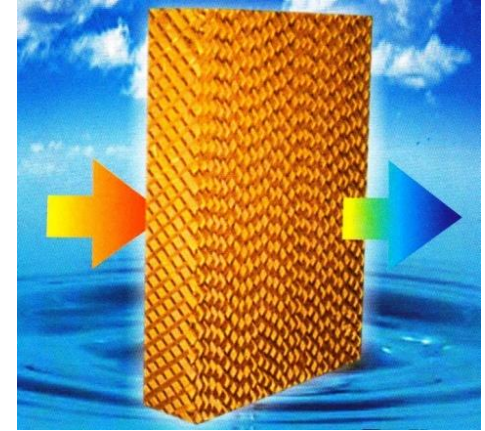
Evaporative Cooling Pads **Authorised Distributor**

Air curtains / PVC Strip Curtains



Applications :

- Evaporative Air Cooling System
- House Hold Air Coolers
- Industrial And Commercial Cooling Applications
- Green Houses / Poultry Farms / Hatcheries
- Live Stocks / Dairy Farms / Breeding Areas
- Turbine “ Air-Intake “
- Spray painting booth



Air curtains are often used in the doorways of Industrial & Commercial facilities to separate environment and to provide an invisible barrier for the protection against dust, dirt, odors, fumes, insects etc. These are especially designed for Shops, hotels, pharmaceutical industries, printing industries, hospitals



PVC Strip Curtains are made from specially developed PVC material, which offers a cost effective and a simple way to control temperature, humidity and prevent the ingress of dust and insects

Tubular Ventilator

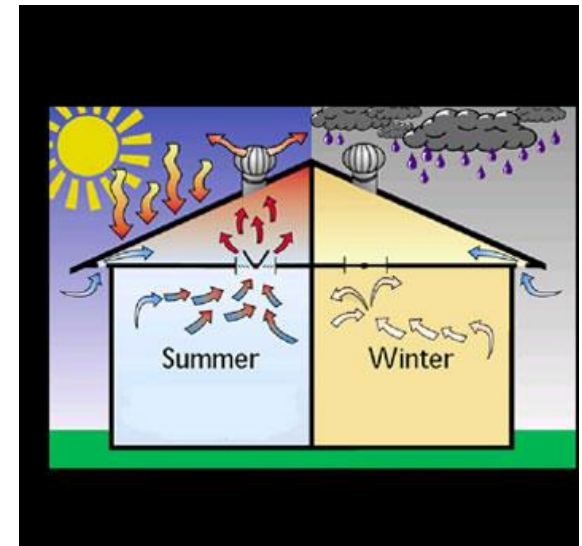


PRINCIPLES OF AIR AND CONTAMINANTS MOVING INSIDE AND AROUND BUILDING



Considering mid day, the heat wave absorbed inside the building comes from different ways. From machines to inside the building It depends on type of machine used, which can generated heat more or less. Heat is in radiation form gets transformed through air mass which makes inside the building temperature to go up.

Ventilator can well circulate heat that transfer though air mass. From sunlight and through building roof During mid day hot temperature, the heat wave has more impact and increase the temperature inside the building Over 80% of air mass transferred heat is in the radiation form. The rest of heat will be in the form of air mass transferring. The ventilator will fairly circulated heat out of transferring. The ventilator will fairly circulated heat out of the building



Special Features - Design with modeling Techniques

1. No noise throughout the working life.
2. The ventilator will work even with the weak wind.
3. ZERO Maintenance cost.

AHU / Industrial Air Washer / Ducting Work



An **air handler**, or **air handling unit** (often abbreviated to **AHU**), is a device used to regulate and circulate air as part of a heating, ventilating, and air-conditioning (HVAC) system. An air handler is usually a large metal box containing a blower, heating or cooling elements, filter racks or chambers, sound attenuators, and dampers. Air handlers usually connect to a duct work ventilation system that distributes the conditioned air through the building and returns it to the AHU. Sometimes AHUs discharge (*supply*) and admit (*return*) air directly to and from the space served without ductwork.



An air washer is a piece of equipment that is designed to improve air quality by scrubbing the air that moves through it and adjusting humidity levels to keep the environment consistent. Air washers are used as part of climate control and air quality systems. **Orange Technical Solutions** offers superior quality Air Washer System, Industrial Air Washer Unit Washer and that works on the principle of cooling outside air by passing it over water-saturated pads, causing the water to evaporate into it.

Clean Room Equipments



A **laminar flow cabinet** or **laminar flow closet** or **tissue culture hood** is a carefully enclosed bench designed to prevent contamination of semiconductor wafers, biological samples, or any particle sensitive materials. Air is drawn through a HEPA filter and blown in a very smooth, laminar air flow towards the user. The cabinet is usually made of SS with no gaps or joints where spores might collect.



DOP Leak Detection Pass Box

Pass Box is designed to minimize traffic and contamination entry into the clean room. It effectively enables parts, tools and other work items to be passed to and from the room. The unit acts as an air lock device preventing ambient air from entering, or clean air from exiting, the clean room

Cleanroom Cabinet : Cleanroom garments can accumulate contamination during storage and between laundry washes, which in turn may lead to lower product yields and increased product quality issues. garment storage cabinets make a positive contribution to maintaining the cleanliness of a cleanroom environment



The Crossover Bench demarcates the line between the slightly soiled changing-zone on entry side of the changing room and the cleaner area in front of the entry to the clean room. It is crossed when cleanroom footwear (overshoes or overboots) is put on.



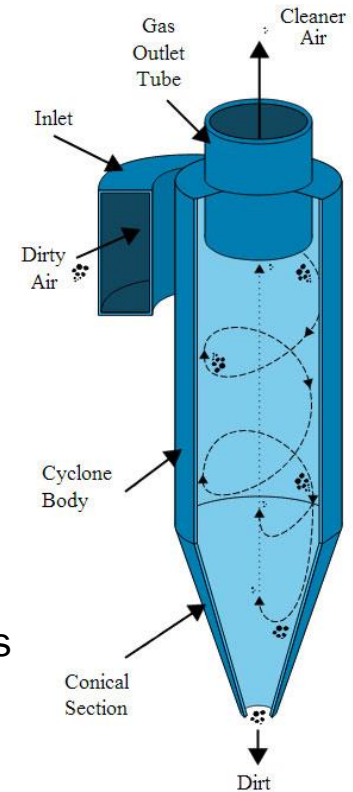
Industrial Dust Collector / Bag Filter / Cyclone



A **dust collection system** is an air quality improvement system used in industrial, commercial, and home production shops to improve breathable air quality and safety by removing particulate matter from the air and environment. Dust collection systems work on the basic formula of *capture, convey and collect*.

First, the dust must be *captured*. This is accomplished with devices such as capture hoods to catch dust at its source of origin. Many times, the machine producing the dust will have a port to which a duct can be directly attached.

In **cyclone separators**, the material, which is permeated by air as a carrier, is set into rotational motion by its own flow speed and appropriate design of the separator. The centrifugal forces acting on the particles accelerate them radially outwards.



At the outer wall, the particles in the air stream lose their kinetic energy due to friction and drop down into the collecting area. The cleaned air stream is discharged centrally upwards by means of an immersion pipe.

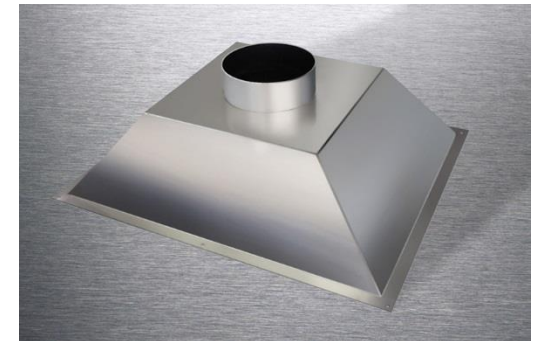


Industrial Chimney / Industrial Blower



A **chimney** is a structure which provides ventilation for hot flue gases or smoke from a boiler, stove, furnace or fireplace to the outside atmosphere. Chimneys are typically vertical, or as near as possible to vertical, to ensure that the gases flow smoothly, drawing air into the combustion in what is known as the stack or chimney, effect. The space inside a chimney is called a *flue*.

We design and manufacturer a wide range of centrifugal fans for most industrial applications. Whether you require it for high efficiency, low noise, clean air, handling light dust or large solid particles, you will find a fan to suit your requirements.

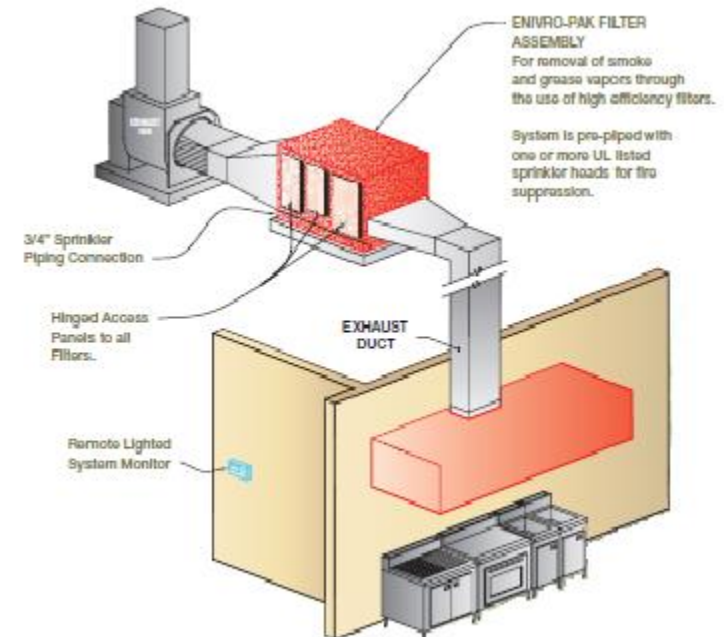


Commercial Kitchen Hood



The Orange tech Filter Assembly is a 16 gauge powder coated all welded/ bolted steel enclosure fitted with top, bottom, and end channels for holding in place pre-filters and high efficiency filters used for removing particulate matter and grease vapors from kitchen exhaust air. Cooking emissions can become a neighborhood nuisance if not properly controlled. Visible smoke & odor may alert authorities to possible compliance problems.

An Orange tech filter assembly removes these concerns and **CREATES CLEAN AIR!** Designed especially for Light/Medium/ Heavy duty commercial kitchens, the Orange tech filter assembly can be located at any point, indoor or outdoor, between the kitchen hood and the point of discharge of the exhaust air into the atmosphere



Hoses / Camlock Coupling / Filters (Hepa, Prefilter, Fine filter)



The single point of source for all the high tech Industrial hoses based on temperature, camlock couplings.



Prefilter

Prefilter :

Application : Primary filtration in HVAC systems, AHUs & comfort air conditioning.



Finefilter

Finefilter :

Application : Pre filtration for very fine filters in AHUs, HVAC systems and comfort air-conditioning.

Hepafilter :

Applications : Final filtration in clean rooms.



Hepafilter

Lighting



Lighting is the deliberate use of light to achieve a practical or aesthetic effect. Lighting includes the use of both artificial light sources like lamps and light fixtures.

We undertake SITC jobs for the area, street, commercial as well as industrial lighting. Also high mast lighting.



Poles for all Application



Our vast selection of poles is designed and manufactured for durability, wear and corrosion resistance, and visual appeal. We begin with the highest-quality materials, designs, and fabricate poles and supports that meet your specifications and exceed your expectations for all purpose lighting and a number of other applications.



Solar Poles / Solar System

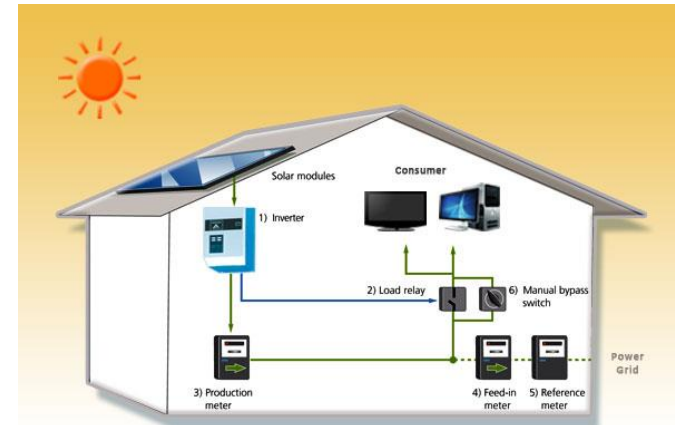


Solar street lights are raised light sources which are powered by photovoltaic panels generally mounted on the lighting structure. The photovoltaic panels charge a rechargeable battery, which powers a light during the night. Most solar panels turn on and turn off automatically by sensing outdoor light using a light source. Solar streetlights are designed to work throughout the night. Many can stay lit for more than one night if the sun is not available for a couple of days. Older models included lamps that were not fluorescent or LED. Solar lights installed in windy regions are generally equipped with flat panels to better cope with the winds.



A rooftop photovoltaic power station, or rooftop PV system, is a Photovoltaic system

that has its electricity-generating solar panels mounted on the rooftop of a residential or commercial building or structure. The various components of such a system include photovoltaic modules, mounting systems, cables, solar inverters and other electrical accessories



AMC And Services



HVAC Maintenance : We at Orange Technical Solutions offer you cost effective and finest quality Annual Maintenance Contract which will always ensure you the smooth functioning of your air conditioning unit, ventilation units. Our periodic Check up system protects your equipment's.

Electrical Maintenance : We do undertake maintenance contract for electrical as well as lighting segments.

Equipment Maintenance :- like Preventive (TBM), Predictive (CBM), Proactive Maintenance. Break – Down Maintenance AMC for Critical & bottle Neck Machine. AMC for Utility like Centrifugal Pump, Cooling Tower. Air Compressor Reciprocating , (Screw) & Hydraulics , Pneumatics, Hoist & Crane Maintenance. PLC Programming as per requirements.

Some of our esteem clients



Robertshaw

Atlas Copco



Mahindra
Rise.

Mahindra
CIE Automotive

MAHLE

**MAGNETI
MARELLI**

Motherson Automotive
Technologies and Engineering
MATE

**STERLING
HEALTHCARE**

KINETIC
Kinetic Taigene Electrical Co. Pvt. Ltd.

Haier

BG
BEDMUTHA
GROUP

alicon
Casting The Future

SCA
Care of Life

UKL[®]
UNI KLINGER LIMITED



brembo

**PUNJAB CHEMICALS
AND CROP PROTECTION LTD.**

SPARK MINDA
ASHOK MINDA GROUP

POSH[®] POONA SHIMS PRIVATE LIMITED
PIONEERS IN PLATE TYPE OIL COOLERS

Contact us :



Nilesh Washimkar

Mobile No :

+91 99604 66645

+91 9860038881

E-mail :

orangets@india.com

wnilesh@outlook.com

